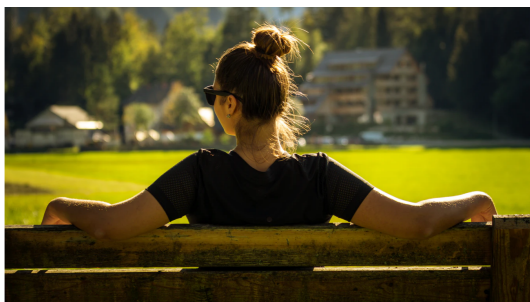




## SwingShift Nurses Notes



### A COVID-19 update

Victoria recently endured a snap 'circuit-breaker' coronavirus lockdown. The five-day lockdown was introduced on 12 February over concerns that a COVID-19 outbreak linked to the Holiday Inn Melbourne Airport could worsen if it wasn't brought under control quickly. Things aren't quite back to 'normal' yet, but with Victoria recording several days of no local cases a further easing of restrictions is expected by the end of the month. The current rules include:



### Nurse of the month

SwingShift Nurses is pleased to reintroduce its 'Nurse of the Month' award as another means of recognising the great work of our highly-skilled and dedicated nurses. The award will acknowledge the work of individual nurses who have excelled in their roles and/or gone beyond the call of duty. From March, each member of our allocations team will cast a vote for 'Nurse of the Month'. This person will be notified, rewarded and announced in the following edition

- no restrictions on leaving your house
- masks are mandatory inside (other than in residential homes)
- masks are mandatory outdoors where social distancing can't be maintained
- outdoor gatherings of up to 20 people in a public place
- you can have up to five visitors in your home per day.



### World Cancer Day

World Cancer Day was born on 4 February 2000 at the World Summit Against Cancer for the New Millennium in Paris. The Paris Charter aims to promote research, prevent cancer, improve patient services, raise awareness and mobilise the global community to make progress against cancer. It includes the adoption of World Cancer Day, which in 2020 marked its 20th anniversary by reaching millions of people through almost 1000 activities and events staged in 113 countries. An initiative of the Union for International Cancer Control (UICC), the World Cancer Day theme 'I Am and I Will' is a powerful reminder that we all have a role to play in reducing the global impact of cancer. You can learn more at <https://www.worldcancerday.org/>



### Condolences

With great sadness, we announce the recent loss

of *SwingShift Nurses Notes* as well as on our social media platforms.



### Satisfaction survey

Early this year SwingShift Nurses distributed its annual nurses survey. The survey is designed to provide a snapshot of the level of satisfaction with the service provided by SwingShift Nurses and covers elements such as the overall relationship, communication, training and responsiveness. A huge thank you to those nurses who took the time to complete the survey. We were particularly pleased that more than 96 per cent of survey respondents were "likely" or "very likely" to recommend SwingShift Nurses to a friend or colleague. We truly value the information and feedback provided as it supports our efforts to continually improve SwingShift Nurses.



### Celebrating Lunar New Year

Over a billion people in China and millions

of a very valued member of our team. Phil was a member of SwingShift Nurses for over 12 years. A psychiatric enrolled nurse, he predominantly worked with Monash Health but also accepted placements at many other facilities. Phil will be greatly missed by SwingShift Nurses. Our hearts go out to his family and friends.

around the world celebrate Lunar New Year. In 2021, Lunar New Year began on 12 February with the first new moon of the lunar calendar. It ends 15 days later on the first full moon. Asian countries celebrating Lunar New Year include China, Thailand, Vietnam, Indonesia, Malaysia and the Philippines. It's traditionally considered a time to honour deities and ancestors and to be with family. Each year is associated with one of 12 animals in the Chinese zodiac. 2021 is the Year of the Ox.



---

*Connect with SwingShift Nurses: T: 03 9481 7222 E: [recruitment@swingshift.com.au](mailto:recruitment@swingshift.com.au)  
W: [swingshift.com.au](http://swingshift.com.au) Copyright © SwingShift Nurses 2019. All Rights Reserved*

Want to change how you receive these emails?  
You can update your preferences or unsubscribe from this list.

**nurses**